

Small Bowel Endoscopy NaviAid™ BGE



Expanding your range

The next, smart generation
of balloon-guided small bowel
endoscopy with your standard
GI endoscopes.

Smart.
medical systems

PENTAX

Your easy enteroscopy kit.

The safe and reliable route to endoscopic small bowel diagnostics.

In addition to having a high level of medical relevance, endoscopic small bowel diagnostics is still a sensitive, specialised area that is particularly demanding in regard to navigation and imaging. The concepts previously available have not been entirely satisfactory either in terms of operability or cost effectiveness.

With NaviAid™ BGE (Balloon Guided Endoscopy), the first NaviAid™ platform product, your department will now have a system that for the first time combines all performance areas intelligently, professionally and economically.

The disposable kit can be fitted to numerous standard endoscopes including the PENTAX 90i and 90K scopes in a few easy steps. This means you also benefit from advantages such as HD+ endoscopic image quality. The BGE disposable is made of latex-free materials, so no latex allergic reactions need be feared when using the device.

In practice, NaviAid™ BGE is convincing from the moment you first use it. In contrast to previous systems, the innovative catheter-based push-and-pull technique allows for finely controlled navigation without the drawbacks of a conventional overtube. Optimal long-range visibility is also ensured, even in difficult passages.



Easily integrable Air Supply Unit, includes indication panel and dual foot-pedal



Freely usable working channel due to externally controlled advancing balloon



Latex-free advancing balloon and stabilising balloon



Almost fully maintained endoscopic flexibility

NaviAid™ BGE advantages:

- **Innovative compatibility:**
Small bowel endoscopy with a disposable add-on device attachable to your GI endoscopes.
- **Perfect combination:**
Ease of use and optimised examination time/insertion depth ratio.
- **Procedure variety:**
Instrument channel usable for various interventional procedures during ongoing enteroscopy due to external position of advancing balloon.
- **Unique flexibility:**
Applicable with both upper and lower endoscopic approaches.

Your new endoscopic horizons.

NaviAid™ BGE is the smartest way to new diagnostic and therapeutic opportunities.

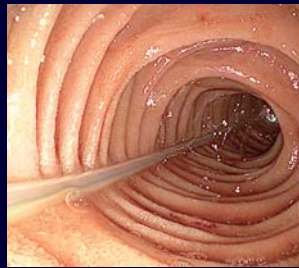
High-quality endoscopic visualisation of the small bowel is the fundamental prerequisite for precise diagnostics and therapy planning. The NaviAid™ BGE in alliance with PENTAX digital video endoscopes offers the best technological basis. In this way, inflammatory (Crohn's disease, coeliac conditions), tumorous (small bowel lesions and tumours) and vascular (angiodyplasias such as angiectasias or varices) symptoms can be detected safely and quickly, and treated directly.

Unique principle:
BGE navigation in the
small bowel

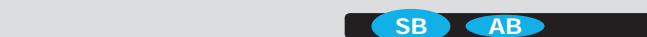
Excellent imaging:
HD+ quality with
PENTAX 90i endoscope

Precise diagnostics:
detection of a multifocal
small bowel lymphoma

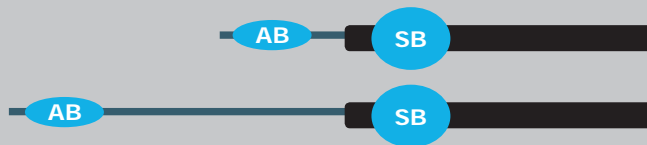
Immediate treatment possible:
staunching of bleeding in a
case of angiodysplasia



BGE technology. Precision navigation, gentle forward motion.



The endoscope with the attached BGE device is inserted as far as possible into the small bowel with both balloons (AB and SB) deflated and the advancing balloon sheltered in the dedicated external channel.



The stabilising balloon is inflated, anchoring the intestine; the catheter with the deflated advancing balloon is advanced deeper into the small bowel.



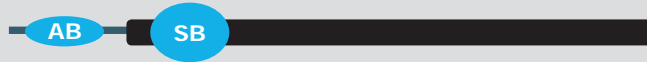
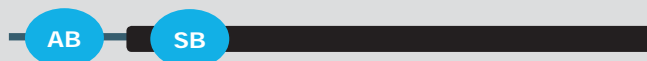
The advancing balloon is inflated to anchor the intestine.



The stabilising balloon is deflated in order to apply the push-pull technique: The anchored advancing balloon is pulled towards the endoscope while the endoscope is pushed forward until the distal end reaches the advancing balloon.



The stabilising balloon is inflated again in order to anchor the intestine and the advancing balloon is deflated. The BGE process can be repeated to proceed further into the small bowel.



NaviAid™ specifications

Air Supply Unit	
Power supply	100-240 VAC, 50-60 Hz
Maximal power consumption	50 W
Pressure set point	60 mbar
Set point accuracy	± 3 mbar
Dimensions (W x H x D)	290 x 165 x 520 mm
Weight	12kg (main unit) / 1kg (accessories)

BGE Disposable	
Balloon diameter (mm)	40
Working length (mm)	1,900
Compatible endoscope diameter (mm)	9.8-13
Advancing tube flexibility (mm)	< 15 (curvature radius)

Smart.
medical systems



Manufacturer:

Smart Medical Systems Ltd.
10 Hayetsira St.
Ra'anana - Israel
Tel: +972 9 / 7444 321
Fax: +972 9 / 7444 543
E-mail: info@smartmedsys.com



Distributed by the following:

PENTAX Europe GmbH
LIFE CARE
Julius-Vosseler-Straße 104
22527 Hamburg
Germany
Tel.: +49 40 / 5 61 92 - 0
Fax: +49 40 / 5 60 42 13
E-mail: medical@pentax.de

PENTAX U.K. Limited
LIFE CARE
Pentax House
Heron Drive, Langley
Slough SL3 8PN
United Kingdom
Tel.: +44 17 53 / 79 27 23
Fax: +44 17 53 / 79 27 94
E-mail: lifecare.sales@pentax.co.uk

PENTAX France S.A.S.
LIFE CARE
112 qual de Bezons
P. B. 204
95106 Argenteuil
France
Tel.: +33 1 / 30 25 75 75
Fax: +33 1 / 30 25 75 76
E-mail: medical@pentax.fr

PENTAX Nederland B.V.
LIFE CARE
Lage Mosten 35
4822 NK Breda
Netherlands
Tel.: +31 76 / 5 31 30 31
Fax: +31 76 / 5 31 30 00
E-mail: lifecare@pentax.nl

PENTAX Italia S.r.l.
LIFE CARE
Via Dione Cassio, 15
20138 Milano
Italy
Tel.: +39 / 02 50 99 58 1
Fax: +39 / 02 50 99 58 60
E-mail: marketing.lifecare@pentaxitalia.it

S.I.M. - Sistemas Integrales de Medicina, S.A.
LIFE CARE
Sistema Solar, 25
28830 San Fernando de Henares
Madrid
Spain
Tel.: +34 91 / 301 62 40
Fax: +34 91 / 751 31 15
E-mail: sim@simmedica.com

PENTAX Europe GmbH EN ISO 13485 certified

www.pentaxeurope.com
www.smartmedsys.com

PENTAX